

65th Anniversary

NORTH SHORE CHILD & FAMILY

GUIDANCE CENTER



2018

Annual Report

CELEBRATING 65 YEARS OF HOPE AND HEALING

About North Shore Child & Family Guidance Center

As the preeminent not-for-profit children's mental health agency on Long Island, North Shore Child & Family Guidance Center is dedicated to restoring and strengthening the emotional well-being of children (from birth – age 24) and their families. Our highly trained staff of psychiatrists, psychologists, social workers, mental health counselors, psychiatric nurses, drug and alcohol counselors, vocational rehabilitation counselors and family advocates lead the way in diagnosis, treatment, prevention, training, parent education, research and advocacy. The Guidance Center helps children and families address issues such as depression and anxiety; trauma; developmental delays; bullying; teen pregnancy; sexual abuse; teen drug and alcohol use; and family crises stemming from illness, death and divorce.

For 65 years, the Guidance Center has been a place of hope and healing, providing innovative and compassionate treatment to all who enter our doors, regardless of their ability to pay.

For more information about the Guidance Center, visit www.northshorechildguidance.org or call (516) 626-1971.

Board of Directors

President

Nancy Lane

Past President

John Grillo

Vice Presidents

Amy Cantor
Rita Castagna
Jo-Ellen Hazan
Andrea Leeds

Secretary

Ruth Fortunoff Cooper

Treasurer

Paul Vitale

Directors

Marilyn Albanese
Angela S. Anton
Matilde Broder
Jacqueline Bushwack

Directors

Charles Chan
Josephine Ewing
Rosemarie Klipper
Seth Kupferberg
Tracey Kupferberg
Andrew Marcell
Carol Marcell
Michael Mondiello
Valerie Ritacco
Heather Schwartz
Alexis Siegel
Troy Slade
Linda Ugenti

Honorary Board Members

Susan Isaacs
Lilo Leeds*
Nancy Marks
Mary Tyler Moore*

* Deceased



A Message From The Executive Director / CEO and President



Near the end of 2018, a single parent walked into our Roslyn Heights office seeking mental health care for her child who was experiencing mood swings and severe behavioral problems. As our intake staff member gathered information from the parent, we learned that she had first called for an appointment at the outpatient facility of a large local hospital system.

When the parent contacted the hospital outpatient program, she was told that they could not see her child for more than six months. The parent informed her child's school, which referred them to us.

We responded immediately, as is our practice. It's not that we're not busy. It's that we structure our services in such a manner that we don't turn people away. We understand what being turned away means to a family with a child living with mental illness. We offer universal access to care.

Sadly, for many families on Long Island this is not an unusual story. In fact, we had been negotiating with the very same hospital system to subcontract with us, using an abundance of New York State funds allocated to three large hospital systems on Long Island, to grow our emergency services. The negotiations went on for the better part of a year at which point they suddenly withdrew, despite the fact that we were given a contract by them to expand our emergency services. In other words, they backed out with no explanation.

Soon thereafter the same large hospital system opened an "urgent care" unit of their own for children. In that program, they see patients only briefly, usually once, and then refer them out. In fact, they have referred many of them to us at the Guidance Center, increasing our client caseload without providing us with the additional funding they had originally promised. More funding would have meant more staff to meet the growing demand that we face, exacerbated by their referrals.

We are proud to have structured our services to be able to respond rapidly and without creating waiting lists, despite the fact that we are not funded or staffed like hospitals.

As a result of what we do and how we do it, we were able to see that parent—the "walk-in" who brought her distressed child here after being turned away by the big hospital outpatient program with an "urgent care" unit—within days, not the six months they had been told.

This is just one illustration that represents many of those families that call us and walk through our doors. Just think about everyone else who has since called that hospital and were told that they must wait for six or seven months to be seen. It's tragic.

To the board and all of our supporters, I thank you for your leadership, faith and continued support that enable us to be a beacon of hope for so many children and families that would otherwise be left in the cold.

North Shore Child & Family Guidance Center will never waver in its mission to bring hope and healing to children and families experiencing mental health issues. We're proud to have celebrated our 65th anniversary this year, and we promise to be here for the community for many years to come.



A handwritten signature in blue ink that reads "Andrew Malekoff".

Andrew Malekoff
Executive Director / CEO

A handwritten signature in blue ink that reads "Nancy Lane".

Nancy Lane
President

A Special Thank You from the Executive Director



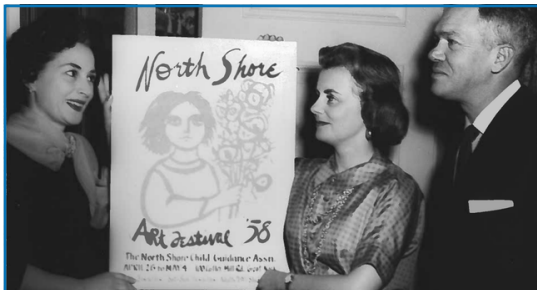
Nancy Lane, who has headed up our board for the past four years and been part of our board since 1986, is stepping down from her role as president in 2019. Nancy has been an exceptional leader and a devoted member of our board and many committees for a very long time; in fact, she also served as board president from 1988-1992. Our gratitude to Nancy is enormous. Luckily, she will remain on the board as past president. Thank you Nancy!

Our Story

Celebrating 65 Years of Hope and Healing

In 2018, North Shore Child & Family Guidance Center celebrated its 65th anniversary of providing compassionate, expert care to children and families experiencing mental health and substance use challenges. From a small operation serving about 100 clients in its first few years, the Guidance Center now serves more than 11,000 individuals and families through our clinical, outreach, consultation and community educational services.

Below are just a few highlights:



The Guidance Center held its third annual Art Festival Fundraiser in Great Neck to help support our services.



A Buick Skylark was the raffle prize at this Guidance Center fundraising event.

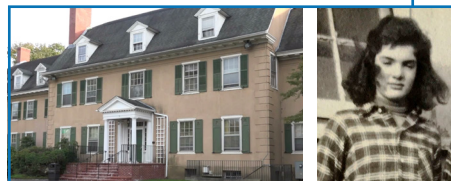


The Guidance Center was awarded a chemical dependency license and offered outpatient services for youth at a new office called The Place.

1953 1958 1960s 1970 1982 1984 1989 1990s



The North Shore Child Guidance Association is officially incorporated as the result of a grassroots movement of parents addressing the need to fill the gap in mental health services for children.



The Guidance Center purchased Whispered Wishes, a historic home that was built in 1905. In the 1940s, a young Jacqueline Bouvier Kennedy was a frequent visitor.



Our Annual Spring Luncheon drew many celebrities and community leaders and is still one of our most popular fundraisers.



As the number of clients increased dramatically, the Guidance Center began holding "Community Conferences," very popular events with prominent guests including Margaret Mead.



Mary Tyler Moore joined the Board of Directors, bringing more awareness and support to the Guidance Center's mission.





In partnership with Nassau B.O.C.E.S., the Guidance Center launched the Intensive Support Program (ISP), which provides mental health services at three B.O.C.E.S. schools. In just five years, the program went from serving 5 students to 132.



On the first anniversary of 9/11, ABC TV aired a documentary with Barbara Walters (center in photo) featuring the Guidance Center's work with families who lost loved ones in the tragedy.



Our yearly fundraising gala took on the theme "Dancing with Our Stars," featuring Guidance Center Board Members and other community leaders.



PROJECT ACCESS
With the release of Project Access, the Guidance Center spearheaded a major advocacy effort to continue the fight against stigma and discrimination.

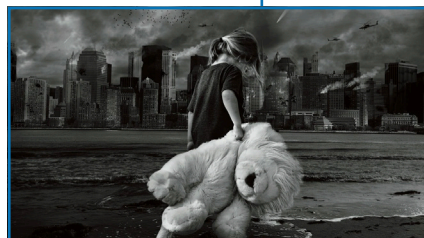
1996 2000 2002 2006 2012 2011-2017 2017 2018



Two generations of the Leeds family joined with Guidance Center staff as "The Place" became "The Leeds Place."

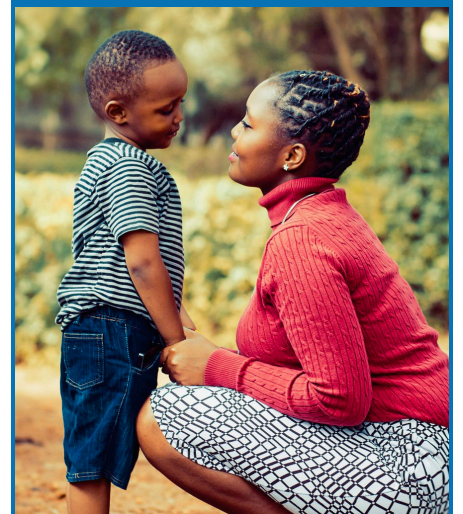


The Marks Family Right From the Start 0-3+ Center opened in Manhasset, serving the youngest of our clients.



As part of a federal initiative, the Guidance Center was chosen to provide crisis counseling for the families devastated by Hurricane Sandy.

In its 65th year, the Guidance Center stands as the premier mental health agency for children and families on Long Island.



2018 Annual Highlights



11,000+
Children and families
served.

0
People
turned away
for inability
to pay.

100+
Staff at the
Guidance Center
working to help
families heal on
Long Island.

3
Offices:
Manhasset
Roslyn Heights
and Westbury.

4
In-school
programs in
Westbury,
Wantagh,
Hicksville and
North Bellmore.



140
Windows replaced in our
Let the Light In campaign.

24-48 hours
Rapid
response
time to
emergency
cases.



928,808
Dollars raised from our
3 major fundraising
events.



1,000+
Children served at the
Children's Center at Nassau
County Family Court.

2018 Guidance Center Awards



◀ Andrew Malekoff received a "Leaders of Mental Health Awareness Award" from NAMI-NYS.

▶ Nancy Lane received the May W. Newburger Women's Roll of Honor award from the Town of North Hempstead.



Mental Health Services

Each of the Guidance Center's three sites offers mental health services for children from birth through 24 and their families. The first step is a comprehensive evaluation, followed by an individually tailored treatment plan that may include any combination of individual, family and group therapy, and, when indicated, medication management with a psychiatrist. All treatment plans and communication with other entities (schools, doctors, etc.) require family consent.

Substance Use Treatment Services

Drug and alcohol treatment and prevention services are provided for children, teenagers and their families at the Guidance Center's Leeds Place – Serving Young People in Westbury. Substance use treatment services include counseling youths who are alcohol and drug users, children who live in families with a parent who is suffering from alcoholism or drug addiction and youths who have co-occurring chemical dependency and mental health problems. Prevention services are offered to the local school district.

Triage and Emergency Unit

The Fay J. Lindner Foundation Triage and Emergency Services offer a rapid response to psychiatric emergencies—a sudden set of circumstances in which there is an impending risk of danger to the child or adolescent such as risk of suicide, risk of physical harm to others, a state of seriously impaired judgment in which the child is endangered, and situations of risk to a defenseless victim involving abuse, neglect or exposure to domestic violence. Our goal is to strengthen, stabilize and support.



Early Childhood Services

The Marks Family Right From the Start 0-3 + Center (RFTS) in Manhasset offers parent education, therapeutic and support services for young children and their families, as well as pre-school evaluations for children 3-5. The RFTS Center is the “umbrella” for early childhood services, agency-wide, that also include:

CAREGIVER GRANDPARENT RESPITE AND SUPPORT PROGRAM (C-GRASP)

– Support and education for grandparents who are the primary caregivers of their young grandchildren. Through partnerships with a team of supportive local entities, we provide the grandparents with a variety of services, including respite and peer support activities, counseling, clothing, food, housing assistance, transportation and school advocacy.

CHANGING FAMILIES

– For young children witnessing the often painful and acrimonious dynamics of divorce. This group program offers the youngsters a therapeutic experience where the use of play, storytelling, relaxation techniques and peer influences help reduce the harmful effects of family crisis. Parents also meet in a separate group that offers them support and educates them about what their children are experiencing.

CHILDREN'S CENTER AT NASSAU COUNTY FAMILY COURT

– A safe and enriching environment on site at Nassau County Family Court for children 6 weeks to 12 years old while their parents are involved in court business. More than “babysitting,” the program is a true learning center, and it also serves as a vital resource and referral center for families.

GASAK (GRANDPARENT ADVOCATES SUPPORTING AUTISTIC KIDS)

– Monthly meeting of grandparents to support, inform and advocate for families with autistic children. The GASAK group also seeks to raise awareness about autism and provide an informational clearinghouse to empower families.

DIANE GOLDBERG MATERNAL DEPRESSION PROGRAM

– Rapid response and diagnosis for mothers suffering from maternal postpartum depression and other perinatal mood and anxiety disorders. Treatment includes individual, family and group therapy. We offer a team approach in which each designated referral is treated as an emergency, and a psychiatric evaluation is provided as part of each assessment.

Our Programs And Services

GOOD BEGINNINGS FOR BABIES (GBB) – Support, counseling, advocacy and education for pregnant and parenting teens at the Leeds Place, our Westbury branch office. GBB works to promote healthier pregnancies, healthier babies and happier relationships between parent and child. In weekly prenatal and parenting groups, teens receive education on issues such as nutrition, labor and delivery, breastfeeding, newborn care and perinatal mood disorders.

FRIENDS OF NANCY MARKS NATURE NURSERY – A thoughtfully designed garden area for young children. There are several hands-on stations and activities (e.g. musical instruments, water, paints, sand, graduated steps, etc.) for young children and their parents to experience nature through their senses. The children who have experienced this area love all that is has to offer and look forward to regularly returning.



Bereavement and Trauma Services

The Lucille and Martin E. Kantor Bereavement and Trauma Center in Roslyn Heights offers assistance to children, youths and their families during times of grief and trauma, including parents of murder victims and other homicide survivors (POMV). Mental health assessments and ongoing care is offered for children who are abuse survivors or have witnessed violence through the Renée and Robert Rimsky Abuse Prevention and Treatment Services.

Diagnostic Services/Learning to Learn

The Guidance Center offers families comprehensive diagnostic assessments by highly qualified teams of caring psychiatrists, psychiatric nurses, psychologists, social workers, mental health counselors and drug and alcohol counselors with special expertise in diagnosing and treating children. Our Learning to Learn Center offers specialized screening, diagnosis and tutoring for children suspected of having learning issues, attention deficit problems and developmental disabilities.



Intensive Child and Family Services

This cluster of services is aimed at children and teens with serious emotional disturbances and their families, offering care coordination, crisis intervention in the home, case management and skills-in-living training. Teams of social workers, psychiatrists and parent advocates work collaboratively to preserve families and prevent institutionalization through an intensive response, often in the home environment. This cluster includes:

CLINICAL CARE COORDINATION TEAM (CCCT) –

Provides home-based clinical services for troubled children and teens. The program serves children ages 5-18 who have either refused to go to therapy or have other issues that prevent them from coming in. CCCT provides in-home individual and family therapy, as well as psychiatric consultation, evaluation and monitoring.

COORDINATED CHILDREN'S SERVICES INITIATIVE (CCSI) –

Coordinates services among multiple systems to prevent children from falling through the cracks. The program works directly with youth who are served in multiple systems and are at risk of placement in one of those systems (i.e., hospital or residential program). CCSI provides intensive care coordination, family-driven, strengths-based service planning, advocacy and parenting skills training.

FAMILY PEER SUPPORT SERVICES – Provides parent-to-parent support both individually and/or in groups to

families who have children experiencing social, emotional and/or behavioral challenges in their home, school or community.

INTENSIVE SUPPORT PROGRAM (ISP) – This school-based program offers intensive mental health services on-site at three Nassau B.O.C.E.S. schools for children, ages 5-21, and their families from all 56 Nassau County school districts. A collaborative program developed by Nassau B.O.C.E.S. and the Guidance Center, ISP provides a therapeutic and nurturing alternative for children with emotional difficulties who feel overwhelmed in regular school.



LATINA GIRLS PROJECT – Offers bilingual and bicultural mental health counseling, group meetings and outings for adolescent girls suffering from depression. The Latina Girls Project was created to respond to the alarming rate of depression, school refusal, self-harm, sexual abuse, suicidal ideation and attempted suicides by young Hispanic girls, ages 12-16. The project incorporates individual therapy, family counseling, weekly group meetings and supervised outings.

ORGANIC GARDEN PROGRAM – Consists of two organic gardens, one at our Roslyn Heights headquarters and the other at The Marks Family Right From the Start 0-3+ Center. Our families and groups have utilized the gardens to learn many important lessons and skills. It has been an opportunity for many technology-engrossed children to unplug and appreciate nature. Not only do the children and their families enjoy this therapeutic time outdoors, but some are getting their first tastes of new vegetables and are broadening their palates.

WILDERNESS RESPITE PROGRAM – Offers groups for youth at risk that emphasize outdoor activities as a gateway to mastery of social skills and youth empowerment. Teens are inundated with constant stimulation from their tech devices. That lack of connection to the natural world negatively impacts them physically, emotionally and socially. By participating in nature activities such as hikes and gardening, the teens learn skills such as individual growth, leadership, self-esteem and improved communication, and they also are contributing to our environment.

Training and Consultation

The Guidance Center provides community workshops, forums and trainings for parents and professionals on a broad range of topics dealing with children and families. Topics in 2018 included addiction to social media, depression and anxiety in children and teens, and combating the stigma against mental illness. We also conducted a training series for professionals on planning for successful groups, Latina Girls at risk for suicide and other self-harming behaviors, child and adolescent psychiatry for non-MDs, and differential diagnosis of ADHD in school-aged children.

Research and Advocacy

The Guidance Center's advocacy work in 2018 was aimed at fighting for equitable care for all who experience mental health and substance use challenges, which we focused on in our Project Access study. In December 2018, the Guidance Center and others achieved a milestone with the passage of the Mental Health and Substance Use Disorder Parity Act. This historic law will compel insurers to submit key data to determine if they are in compliance with federal and state parity laws. We also became one of the partners in the Parity@10 Compliance Campaign, which seeks to ensure that insurance carriers comply with the federal parity law so that consumers can access the mental health care they are entitled by law to receive.



Letters

Thank you so much for your kindness and attentiveness in working with my son. I can only imagine how difficult it must be to step into a work in progress with a case as challenging as his.

I know that you are readily available to answer my questions or to address my concerns, and I greatly appreciate your assistance when my son was in the hospital.

All I have are words to thank you and they hardly seem to be sufficient, but I mean them from the bottom of my heart.

- Grateful Parent

I came to you as a complete disaster, but you gave me the help I needed. Whenever I've talked about working with you, I've described it as "tough in all the right places." Even when I was a total pain you kept pushing me to work hard at getting better. I want to assure you that I'm not giving up on myself. You helped me fight so much and I will not let it be in vain.

- Teenage Client

I feel very grateful for the many resources that were available to my entire family throughout this very delicate time in our lives. I appreciate the guidance and support we received, whether it was through an at-home meeting with our caseworker or speaking with our parent advocate who has an enormous amount of knowledge, or with the therapist who made my son feel comfortable from the first day.

As parents, we were also part of a wonderful workshop that allowed us to share our stories with other families going through similar situations. As of today the results that we have seen with our son have been amazing! Words simply cannot describe our gratitude.

- CCSI Family

One of my first therapy groups was making this mural. I was scared and nervous, and I didn't know what to expect. But being a part of making this piece of art was a life-changing experience.



Just a bunch of teens going through the same issues, coming together to make something beautiful. I'm able to say that I took part in creating a beautiful mural that was not only fun to make but helped me and others refocus our attention on something positive instead of the negative.

- Group Therapy Client

Thank you for saving my family in so many ways. I know it wasn't always easy. When we met, my daughter was young and quiet, and she secretly rebelled against even a tiny hint of how to handle things. She challenged you at every opportunity. You didn't give up.

You listened when she was sad, angry and confused, and when panic took her words away. You challenged her stubbornness and you knew when to back off and let it be her way.

You listened while I cried, desperate for relief. Thank you so much!

- Happy Mom



When Emma was 14 years old, she began experiencing serious depression and anxiety as a result of her parent's divorce.

When her father called the Guidance Center, Emma was seen within 24 hours.

Emma was put in individual, group and family therapy. After eight months, she was feeling well enough to end therapy, with the assurance from her social worker that, if she ever needed help, the Guidance Center would be there for her.

A year later, Emma experienced a setback when her father had a major health scare. She called her former therapist at the Guidance Center, and in less than a week she was back in treatment. She and her father participated in separate groups, Emma in our Triage & Emergency support group and her father in a parent support group.

In addition, Emma actively took part in the Guidance Center's Wilderness Respite Program, where teens are taken on hikes. She made new friends and learned how to deal with her

challenges in a healthy way. Today, she is getting ready to start her very first summer job.

For most of his life, Jackson had a history of behavioral problems, both at school and at home.

He took out his frustrations by throwing furniture and being physically aggressive with school staff and peers.

Jackson was placed in the Guidance Center's school-based Intensive Support Program (ISP), where he had individual therapy and numerous accommodations, including smaller classes.

Now 13 years old, Jackson has made tremendous progress. He regularly visits the "support" area, where he has learned to use deep breathing techniques to reduce his anger and anxiety. He successfully completed middle school and is eager to move on to high school.

Isabella arrived on Long Island when she was 12 years old.

For most of her life, she had been raised by her grandmother in Central America while her parents were in the U.S., working to save enough to bring her here safely. Isabella missed her grandmother and resented her parents' strict rules. She began to rebel, engaging in dangerous behavior and expressing suicidal thoughts.

As part of the Guidance Center's Latina Girls Project, Isabella and her mother participated in individual, family and group therapy, and they've learned to communicate

openly. Isabella loves to go on the program's monthly outings; she now sees the world as a place of hope and possibility. The Guidance Center, she says, has given her a safe place to be heard and healed.

Like many children with severe social anxiety, Alex stopped going to school.

When his parents called the Guidance Center, they were told about our Coordinated Children's Services Initiative (CCSI), in which our staff works to provide access to a variety of services to prevent children from falling through the cracks.

Alex's mother attended a group for parents with school-avoidant children to build her advocacy skills. She successfully worked with her school district to develop an appropriate plan to get Alex back to school. When he returned, he joined an after-school club—a huge sign of progress for a child who couldn't even walk into the school building a year ago.



When media needs a resource to talk about mental health issues, they call on North Shore Child & Family Guidance Center!

ANTON MEDIA GROUP

Executive Director Andrew Malekoff's monthly column "Parenting Plus" was featured in Anton Media's newspapers.

88.1FM WCWP.org

Clinical Supervisor Vanessa McMullen appeared on WCWP Radio's Taking Care of Business to give listeners insight into postpartum depression and other perinatal mood disorders, which we treat through our Diane Goldberg Maternal Depression program.



Left: Drs. Nellie Taylor-Waltrust and Martine Hackett on PBS's MetroFocus. Right: Andrew Malekoff and Kerry Lynn Eller on MetroFocus.

Dr. Nellie Taylor-Waltrust, Director of Leeds Place, and Hofstra University's Dr. Martine Hackett spoke about the high rate of maternal and infant mortality in certain Nassau County towns on **MetroFocus**, a television news show that appears nightly on PBS stations Thirteen and WLIW21.

Andrew Malekoff and Kerry Lynn Eller also appeared on **MetroFocus** to discuss Project Access and parity issues.

MENTAL HEALTH NOW PRESENTED BY NAMI | NYS



Left to right: NAMI-NYS's Matthew Shapiro, Andrew Malekoff and Tracie Gardner, Associate Director of the Legal Action Center, on Mental Health Now.

On television's **Mental Health Now**, Andrew Malekoff discussed the need for mental health parity.

Long Island Business NEWS

Long Island Business News featured the Guidance Center and our Project Access report in its story "The Fight for Parity" and covered our 65th Anniversary Gala.



Outreach Worker Marmeline Martine and Dr. Nellie Taylor-Waltrust appeared on the Town of North Hempstead's **Project Independence** radio, sharing information about C-GRASP, our Caregiver Grandparent Respite & Support Program.

BlankSlate MEDIA

Andrew Malekoff's column "Kids in Caves, Kids in Cages," appeared in **Blank Slate Media/The Island Now** newspapers. The story won a Folio Award for best commentary.



Elissa Smilowitz (left) and Regina Barros-Rivera with Richard Solomon in the studios of WCWP radio.

Guidance Center Associate Executive Director Regina Barros-Rivera and Elissa Smilowitz, LCSW and Coordinator of Triage and Emergency Services, appeared on WCWP Radio's **Taking Care of Business** program.

WNYC

In October 2018, an interview with Andrew Malekoff was featured on NPR radio station WNYC's newscast during the local portion of **All Things Considered** and **Morning Edition**.

Newsday



The grandchildren of Roger and Marie Dextra gather at the family's Westbury home. (Photo courtesy of Newsday).

Newsday ran two stories that featured the Guidance Center—one about our program for grandparent caregivers and the other about our school-based Intensive Support Program.

BEHAVIORAL HEALTH NEWS.

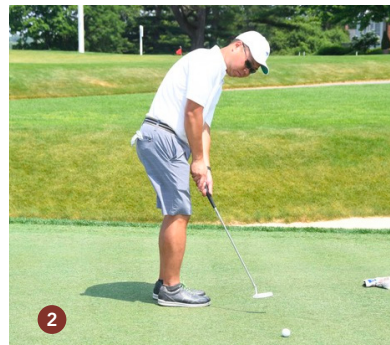
Andrew Malekoff discussed depression and suicide in an article in **Behavioral Health News**.

Spring Luncheon



1) Guest Speaker Dr. Victor Fornari with Andrew Malekoff and Nancy Lane. 2) Nancy Lane with Spring Luncheon Co-Chairs Amy Cantor, Jan Ashley and Alexis Siegel. 3) Canasta players enjoying the Spring Luncheon. 4) Left to right: Merry Slone, Carol Wolowitz, Cynthia Rubinberg and Joan Grant. 5) Left to right: Erika Ewing, Josephine Ewing, Ann Alexander and Diane Patterson. 6) Shoppers enjoying the boutiques at the Spring Luncheon.

Jonathan Krevat Memorial Golf & Tennis Classic



1) Left to right: Esther Dominguez, Gerda Andersen, Chris Bransfield, Inge Costa and Maggie Koumas. 2) Jeremy Shao. 3) Jeff Krevat, Nancy Lane and Andy Marcell. 4) Left to right: Mitchell Klipper, Mike Leeds, Nancy Lane and Frank Castagna. 5) Foursome enjoying their day at The Creek. 6) Krevat Cup presented to honoree Ed Haug by Andrew Malekoff, Mike Mondiello and Troy Slade.

Fundraising Events

65th Sapphire Anniversary Gala



1) Left to right: Deirdre Costa Major, Andrea Leeds and Michael Leeds. 2) Catherine Castagna and Ernie Lagoja enjoying the silent auction. 3) Andrew Malekoff with Mistress of Ceremonies Carol Silva. 4) Lloyd Abramowitz supports the Guidance Center during the paddle raise. 5) Congressman Tom Suozzi presents citations to honorees Andrea and Michael Leeds and Americana Manhasset Champions for Charity represented by Rita Castagna, Frank Castagna and Deirdre Costa Major. 6) Nancy Lane and Andrew Malekoff with guest speaker Linda Beigel Schulman. 7) Left to right: Nancy Lane, Russell Albanese, Marilyn Albanese and Carol Marcell. 8) Frank Castagna and Deirdre Costa Major.

Professional Workshops/ Community Education



1) Regina Barros-Rivera conducts a workshop on Latina Teens at Risk, with Linda Ducca. 2) Andrew Malekoff speaks to attendees at his Strengths-Based Work with Groups workshop. 3) Dr. Reena Nandi gave a workshop titled "Introduction to Child & Adolescent Psychiatry for Non-MDs."



1) Celebration honoring Janet and John Kornreich, who fund the monthly outings for the Latina Girls Project. 2) The Guidance Center hosted a community forum on the dangers of vaping. 3) Staff and community members participate in the annual National Night Out in Westbury. 4) 65th Annual Meeting honorees: Lisa Strauss, Dr. Reena Nandi, Jeanne Holmes, Steven Blank, Jennifer Pearlman, Dr. Ilene Nathanson. 5) Catherine Castagna, Frank Castagna, Andrew Malekoff, Lauren McGowan, Rita Castagna and Ernie Lagoja at the Brooks Brothers Kickoff Event for Champions for Charity. 6) Andrew Malekoff, Dr. Martine Hackett, Legislator Siela Bynoe, Assemblywoman Michaelle Solages, Dr. Nellie Taylor- Walthrust at the Nassau County Birth Equity Breakfast. 7) Author Nicole Nagy at her book signing with Regina Barros-Rivera. 8) The Welcoming Club of Garden City presented the Guidance Center with a check for \$30,000, the result of their fundraising events for 2017-2018. 9) The Guidance Center was the beneficiary of the Exotic Car Show at the Mansion at Glen Cove. Pictured: Charles and Daphne Chan, Glen Cove City Councilwoman Marsha Silverman, Rebecca Hollander and Jim Smiros. 10) Lauren McGowan, Bob Mangi, Allison Cacace, John Zenir and Andrew Malekoff receive citations from Legislator Josh Lafazan at the benefit for our Children's Center at Nassau County Family Court. 11) A guest at our Ladies Night Out at Neiman Marcus receives her makeover. 12) Andrew Malekoff spoke at the October Parity for All Roundtable at the NYU Langone-Winthrop Research Institute. Pictured here with Legal Action Center policy director Sebastian Solomon. 13) Andrew Malekoff testified before the Nassau County Legislature in support of the Mental Health First Aid Training Bill. Pictured here with Legislator Siela Bynoe.

2018 Contributors

\$50,000 & Up

Americana Manhasset
The Rita and Frank Castagna Family Foundation
Giant Steps Foundation
Lucille Kantor
The Kupferberg Foundation
Fay J. Lindner Foundation
Nancy Marks
MJS Foundation

\$20,000 - \$49,999

Marilyn and Russell Albanese
Aon Foundation
Daniel Donnelly
Maureen and John Ferrari
Diane Goldberg Foundation
John Grillo
Haug Family Foundation
Haug Partners
Klipper Family Foundation
Andrea and Michael Leeds
Nanci and Larry Roth
The Welcoming Club of Garden City

\$10,000 - \$19,999

The Bahnik Foundation
Matilde and Cliff Broder
Ike, Molly & Steven Elias Foundation
Helene Fortunoff
Susan and Roger Fradin
Michele and Marshall Freidus
Sandra and George Garfunkel
Horace & Amy Hagedorn Fund
Jo-Ellen and Ira Hazan
Susan and Jeff Krevat
Nancy and Lewis Lane
Carol and Andrew Marcell
Peter Marino Architect, PLLC
Marie Rautenberg
Caroline and Sigmund Schott Foundation
Jane and Martin Schwartz
The Slomo and Cindy Silvan Foundation
UJA-Federation of New York

\$5,000 - \$9,999

Chris and Jack Bransfield
Amy and Daniel Cantor
Catherine Castagna and Ernie Lagoja
Community Chest of Port Washington
The Dammann Fund
DeMarco & Nesi CPAs LLC
Executive Fliteways
Caryn Fink and Steven Schlesinger
Ruth Fortunoff and Brian Cooper

Genatt V LLC
Greentree "Good Neighbor" Fund
Natale Lanza
Marion and Irving Levine
Rochelle and Hal Lipton
The Eleanor & Roy Nester Family Foundation
NYU Winthrop University Hospital
Rechler Equity Partners
Rivkin Radler LLP
Barbara and Alan Sackman
Signature Bank
Somp International
Steel Equities
Lisa and Gary Strauss
TD Bank
United Way of Long Island

\$2,000 - \$4,999

Sheryl and Christopher Albanese
Aon Benfield
Susan and Richard Arluck
CA RICH Consultants Inc.
Audrey and James Calpin
Fern and Hersh Cohen
Simon & Eve Colin Foundation
EMM Wealth
Josephine and Floyd Ewing, Jr.
Flushing Bank
Fusion Architecture
Edmund Geller
Doris and Hans Grunwald
Kyle Haug
Hirshleifer's
Hofstra University
Rebecca Hollander
Katherine Kamen
Keane & Beane, P.C.
Gloria Kindman
John and Janet Kornreich Charitable Foundation
Laspata/DeCaro Studio
Stephan Leeds
Faith and Les Lerner
Maier Foundation
Deirdre Costa Major
Dale and Andrew Malekoff
Manhasset Community Fund
March of Dimes
Markel Corporation
Russell Matthews
Danielle and Mark Merollo
Jodi and Michael Mondiello
Nassau County Bar Association - We Care Fund
New York Community Bank

Nussbaum Yates Berg Klein & Wolpow, LLP
Daniel Oliver
Ophthotech
Premier Plus Education
PSEG Long Island LLC
Keith Rosenberg
Susan Rosenberg and Peter Braverman
Michelle Russo and Peter Verdirame
Patricia and Matthew Ryan
Save the Starfish Foundation
Linda and Michael Schulman
Randi Fetner Sherman and Steven Epstein
Arlene and Richard Sirlin
Southard General Group, Inc.
R&S Strauss Family Foundation
Marie and Paul Vitale
Jane and Peter White
Erika and Kenneth Witover
Diane and Howard Wohl
Carol and Arnold Wolowitz
Women's Fund of Long Island
Zeta Global
Maxine Zinder

\$1,000 - \$1,999

Mia and Jeremy Abelson
Lloyd Abramowitz
ACA Waste Services Inc.
Adams Fund
Adelphi University
Ann and Ken Adler
Advantage Group
Jeanette and Joseph Albanese
Anthony Arnold
Rhoda Ashley
AXA Foundation
Bancker Construction Corp.
Ilana and Isaac Benmayor
Stacy and Charles Bennett
Jill and Len Berman
Gene Bernstein
Brooks Brothers
Bernadette Castro
CDS- Mestel Construction Corp.
Certilman Balin Adler & Hyman, LLP
Daphne and Charles Chan
Fara and Richard Copell
Corporate Care International, Inc.
Linda and Denis Cronin
Daniel Gale Sotheby's International Realty
Davidoff Hutcher & Citron LLP
Gueric Dechavanne
Digital Graphic Imagery Corp.
The Enfranchisement Foundation

Susan and Leonard Feinstein Foundation
Cristina Fernandes
Jennie Fortunoff
Goldman Sachs
Joan and Jeffrey Grant
Dorothy Greene
Ila and John Gross
Heidi Heltzel and Marc Prisant
Sheree and Jim Incorvaia
iStar
Maria and Greg Jobin-Leeds
Bonnie and Lawrence Kivel
Kleet Lumber
Anne Kroeker and Richard Leeds
The Kenneth & Harriet Kupferberg Family Foundation
Kurz Family
Kurzman Eisenberg Corbin & Lever, LLP
Sandra Kuzmich
Amy and Robert Lawrence
Lauren Leeds
Leeds School of Business/University of Colorado
Barbara McAlpine and Don Segal
Mordfin LLP
Randy Nayrod and Kim Sozzi
Northwell Health Systems
Northwell Orthopaedic Associates
People's United Bank
Raich Ende Malter & Co. LLP
Red Apple Group
Arlene Richards
Marvin Rosen
Cynthia and Michael Rubinberg
The Sakhai Family Foundation
Andrew Sama and Susan Swezey
Samuel Ramirez & Co.
Heather and David Schwartz
Zinia and Jeremy Shao
Alexis and Howard Siegel
Denise and Robert Silverberg
Sirina Fire Protection Corporation
Ruth and Michael Slade
Karen and Marc Spector
Steven Dubner Landscaping
Pamela and Laurence Tarica
Transitions
Denise and Fred von Stange
X-Cell Realty Associates, LLC
Kyle Wool
John Zenir
Zimmerman/Edelson Inc.

\$500 - \$999

Rod Aboff
Grace and Anthony Abruzzo
Karen and Edward Adler
Aiello, DiFalco & Gianakos, LLP
Albertson Electric
Barnes Catterson LoFrumento Barnes, LLP
Roseanne and Ian Bass
Benjamin Motors, Inc.
Ellen and Marc Blumencranz
John Bransfield
Muriel and Bert Brodsky
Joyce Bruno
C.D.E. Air Conditioning Co. Inc.
The Chintz Giraffe
Susan and Mark Cluster
CLK Properties
Judith Cohart
Condon, O'Meara, McGinty & Donnelly LLP
Nancy and James Cowles
Designs that Donate
Dimascio & Associates LLP
Edwards & Rockmore, P.C.
Farrell Fritz, P.C.
Porter Fleming
Gassman Baiamonte Gruner, PC
Bonnie and Gary Goldberg
Amy Goldberger
Diane and Michael Gross
Betty and Robert Hylton
Susan Isaacs and Elkan Abramowitz
Jeffrey Kimmel
Sue and Jon Korn
Kramer Levin Naftalis & Frankel LLP
Wendi and Brian Kushner
Pamela and William Lawrence
Bonnie Levy
Mangi & Graham LLP
Cindy and Scott Matte
Nancy and Guy Mazarin
Mejias, Milgrim & Alvarado, P.C.
Metro Fab Pipe, Inc.
Moritt Hock & Hamroff LLP
Linda and Michael Mossman
Ellen and Michael Mullman
Brian Murphy
Park West Pharmacy
Elizabeth Pessala
Helen and John Petras
Warren Pike
Karen and Bruce Pomerantz
Deborah and Michael Rashti
Andrea and Keith Rieger
Renée Rimsky and Murray Beckerman

Cindy Roe
Vanessa and Brian Rogan
Michele Rokhsar
Rosicki, Rosicki & Associates, P.C.
Ruskin Moscou Faltischek, P.C.
Sackstein Sackstein & Lee, LLP
Lauren Schiff
Schlüssel Ostrow Karabatos, PLLC
Paula Schwartz-Pervil and Paul Pervil
Jane and John Shalam
Shire
Siegel Consultants, Ltd.
Darya and Troy Slade
Society of St. Vincent DePaul
Laura Stein
Stempel Bennett Claman & Hochberg P.C.
Susan and Jeffrey Stern
Nancy and Howard Stone
Systems Management Group, Inc.
Nellie Taylor-Waltrush
Tilles Center for the Performing Arts
Time Equities, Inc.
Todd Mitchell Associates
The Virdone Law Firm, P.C.
Vishnick McGovern Milizio LLP
Florence and Craig Westergard
Claudia and Norbert Wolloch
Tom Wrenn
Laurie Joseph Yehuda
David Zwally



Investing In Our Children's Future

Annual Fund

Your donation to an annual fund appeal provides vital general operating support that directly impacts the children and families we serve. These gifts are allocated when and where the need is greatest.

Special Occasion Gifts

Commemorate a birth, anniversary or special event, or make a donation in memory or in honor of a loved one. These contributions help maintain our programs and services. A gift announcement card will be sent in your name.

Events

Your support of our fundraising events through the purchase of tickets, journal ads, underwriting, sponsorships, raffles and auction items provides necessary unrestricted funding that allows us to continue our mission of caring for the emotional health of children, youth and families on Long Island.

Name Recognition

Room naming opportunities and wall plaques are available at all three of our locations including our Roslyn Heights headquarters; The Leeds Place – Serving Young People; and the Marks Family Right From the Start 0-3+ Center.

Let the Light In

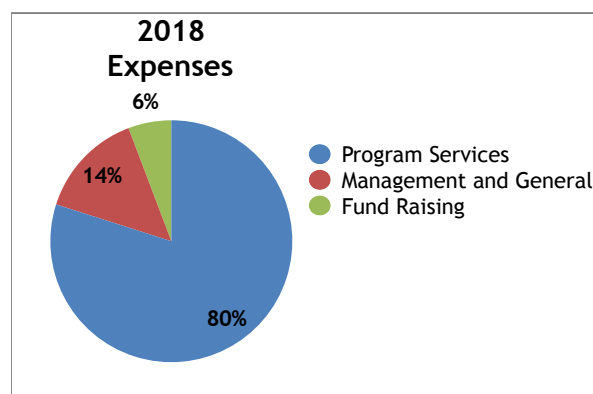
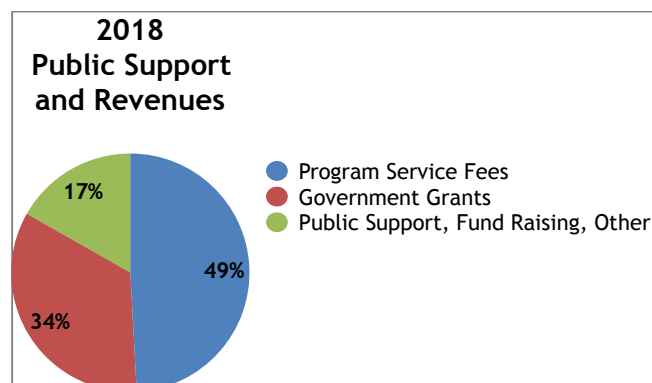
This is an ongoing special campaign for renovations to our historic Roslyn Heights location. We are "sealing the envelope," which will help facilitate a more energy-efficient, environmentally sound and welcoming physical space. The goal is to raise \$1.2 million toward the replacement of 140 windows and shutters, pointing the degrading chimneys, replacing the stucco and repairing the roof. Much of this work has already been completed but there is still work to do; contributions are needed so that the building will remain a place of hope and healing for many years to come.

To learn how you can support our lifesaving mission, please contact Director of Development Lauren McGowan at LMcGowan@northshorechildguidance.org or call (516) 626-1971, ext. 320.



**North Shore Child and Family Guidance Assoc., Inc.
Audited Statement of Activities**

	<u>Year Ended December 31</u>	
	<u>2018</u>	<u>2017</u>
Public support and revenue		
Program service fees	\$ 4,420,718	\$ 4,193,102
Government grants	3,065,132	3,260,045
Contributions	868,150	1,371,665
Special events, net	788,200	550,941
United Way & Community funds	18,876	20,500
Investment return (loss)	(79,200)	136,492
Other	3,423	76,617
Total public support and reven	<u>9,085,299</u>	<u>9,609,362</u>
Expenses		
Program services		
Clinical	4,826,298	4,627,151
School Community Collaborative	1,927,503	1,854,925
Early Childhood	121,465	118,381
Outreach	199,622	197,319
Total program services	<u>7,074,888</u>	<u>6,797,776</u>
Supporting services		
Management and general	1,267,601	1,230,163
Fundraising	510,425	501,423
Total supporting services	<u>1,778,026</u>	<u>1,731,586</u>
Total expenses	<u>8,852,914</u>	<u>8,529,362</u>
Increase in net assets	232,385	1,080,000
Net assets, beginning of year	<u>2,896,278</u>	<u>1,816,278</u>
Net assets, end of year	<u>\$ 3,128,663</u>	<u>\$ 2,896,278</u>



Full audited financial statements are available upon request



Addresses and Locations



**The Leeds Place -
Serving Young People**
999 Brush Hollow Road
Westbury, NY 11590-1766
(516) 997-2926



Administrative Headquarters
480 Old Westbury Road
Roslyn Heights, NY 11577-2215
(516) 626-1971



**The Marks Family
Right From the Start 0-3+ Center**
80 North Service Road LIE
Manhasset, NY 11030-4019
(516) 484-3174

**The Lucille and Martin E. Kantor
Bereavement & Trauma Center**
480 Old Westbury Road
Roslyn Heights, NY 11577-2215
(516) 626-1971

Visit us at www.northshorechildguidance.org

Friend us on Facebook at North Shore Child & Family Guidance Center

Follow us on Instagram @the_guidance_center

Tweet us @NSCFGC

Follow us on Pinterest @NSCFGC

Follow us on LinkedIn @north-shore-child-&-family-guidance-center



Licensed & Supported by: Nassau County Department of Mental Health, Chemical Dependency, and Developmental Disabilities Services; New York State Office of Mental Health; New York State Office of Alcoholism and Substance Abuse Services. Supported by: New York State Office for People with Developmental Disabilities; New York State Office of Children and Family Services; Nassau County Department of Health; United Way of Long Island; Great Neck Community Fund; Community Chest of Port Washington; Manhasset Community Fund.