

Serving Our Youngest Clients

At North Shore Child & Family Guidance Center, we promise to work with children from birth to age 24. Our youngest clients receive compassionate therapy and innovative treatment at our **Marks Family Right from the Start 0-3+ Center** in Manhasset, where we see children up to nine years old.

“Our services are very unique,” says Dr. Sue Cohen, Director of Clinical Services at **Right from the Start**. “Most mental health agencies don’t work with very young children. We have a family-centered, creative approach that helps parents and children manage difficult situations.”

Children come to us experiencing a wide range of concerns, including anxiety, oppositional defiance, attention deficit disorders and trauma resulting from bereavement, divorce and abuse.

The primary method of helping them through these challenges is with play, which, Cohen says, “is a child’s natural way of expressing themselves.” Through play therapy, children can work through emotional struggles since they have not yet developed the language to communicate



their thoughts and feelings. “If there is a difficult situation among siblings, we pick up dolls and play with the children, showing various scenarios that might help ease the conflict,” explains Cohen.

She cites a recent case in which a six-year-old girl’s parents were divorcing. “I brought in two dollhouses so she could play with Mommy’s house and Daddy’s house. It helped her express her feelings and learn ways to manage this transitional time in her young life.”

Back to the Garden

Playing outside is also a very therapeutic way to engage children. At **Right from the Start’s** organic garden, youngsters learn lessons about responsibility, collaboration and self-esteem. “We tell children they can ‘weed out’ unnecessary behaviors and do things to help support good behaviors,” says Cohen. “It empowers them.”

Our **Friends of Nancy Marks Nature Nursery** features a variety of hands-on stations and activities, such as musical instruments, water, paints and graduated steps designed to help children explore the sights, sounds, smells and touch of nature.

“Kids as young as two and three are getting addicted to tech devices and having tantrums when their parents take them away, which is a huge problem,” says Cohen. “Playing outdoors fosters good mental and physical health.”

Responding to the Pandemic

While most of our young clients are receiving in-person therapy once again, the pandemic required our **Right from the Start** team to develop very creative approaches to make virtual sessions engaging for children. They used online games, books and other interactive methods – for example, virtual scavenger hunts where therapists ask children to search for something that makes them feel comfortable or calms them when they are upset.

“Those methods can help kids work on emotional regulation, independence, impulse control and other skills,” says Cohen, adding, “We couldn’t get down on the ground with them and play like we usually do, but I’m very proud of how our team responded with thoughtful,



innovative approaches to help children through a very scary and difficult time.”

These days, the Guidance Center staff is seeing an increasing number of two- and three-year-olds who, because of the extended lockdown, have not been around many people and haven’t learned how to interact with other children.

“Many younger children have intense separation anxiety going to school or daycare,” says Cohen. “In some ways, we still don’t know what impact the pandemic will have on little ones.”

One thing we do know for certain: With the help of our dedicated supporters, we will continue to meet every challenge that faces the youngsters in our community!

Inside This Issue:

**Fall Fundraiser Features
Kenny G** PAGE 6

**Butterfly Wall Spreads Its
Wings** PAGE 9

**Standing with the
Community** PAGE 12

Plus

**How YOU Can Make a
Difference!** PAGE 17

A Message From The Executive Director/CEO

Innovative Treatment for Kids of All Ages



Greetings and welcome to our Fall 2022 Guidelines newsletter! I'm delighted to share the news of all that has been happening at North Shore Child & Family Guidance Center during this incredibly busy time.

Since our Spring newsletter, we have returned to in-person fundraisers, and the monies raised at these events are crucial to help us fulfill our mission (you'll read more about these events inside this issue).

Back In Person

As you may know, most of our fundraisers had been cancelled or held virtually for more than two years due to COVID-19 concerns, so these gatherings were especially joyful. It was a great pleasure to meet so many of you in person – something I had not had the opportunity to do since I began my tenure as Executive Director/CEO of this amazing organization in the midst of the pandemic.

The good news is that many of the precautions that were necessary to safeguard our communities are behind us, hopefully for the long haul, and for the most part, our

"Little kids can have big problems, and we promise to be there when and where they need us."

children are back to their familiar routines. But there is another crisis that shows no signs of abating: the epidemic of mental health issues spurred by long-term social isolation, anxiety, illness, bereavement and other challenges.

While all of us have been impacted, the reality is that children, teens and young adults have experienced the losses surrounding COVID-19 in deep and potentially long-lasting ways. Numerous studies have reported sharp increases in rates of depression, anxiety, loneliness and suicide attempts over the past two years.

But those numbers were on the rise for more than a decade preceding the pandemic, and they are not slowing down. In a recent Ipsos survey, Americans clearly recognize the ongoing dangers, rating mental health concerns above COVID-19 worries.

Innovative Treatments

At the Guidance Center, we have been



I was thrilled to celebrate my first anniversary at the Guidance Center in June 2022!

responding to the needs of our community for nearly seven decades with expert therapeutic treatment and a variety of innovative programs for kids of all ages. In our cover story, we feature our services for our youngest clients at our **Marks Family Right from the Start 0-3+ Center** in Manhasset. As you'll learn, little kids can have big problems, and we promise to be there when and where they need us. (And a big thank you to amazing photographer Eduardo Perez-Tobon for contributing his talents with our cover photos!)

In fact, our swift responsiveness came into play this past September, when the Long Island Expressway near our Manhasset office was closed due to a fatal accident. Our dedicated therapists met the challenge and ensured there was no interruption in our families' treatment. They immediately called to let them know there was no need to miss their appointments, since we could see them via telehealth or at our main Roslyn Heights headquarters.

We also are able to respond through the new 988 Suicide Crisis Hotline, which launched in July nationwide. We are proud to be one of the organizations that receives referrals from this new service.

You Make It Happen

Your generosity is the reason we can answer the call for the children and families in our community as we near our 70th anniversary. We are eternally grateful for your support.

Sincerely,

Kathy Rivera
Executive Director/CEO

We've Got You Covered!

Given the continuing safety issues surrounding the pandemic, we are seeing many of our clients via a secure, easy-to-access telehealth platform. However, all of our staff are on site, and we are conducting in-person appointments at our three locations. We continue to offer flexible services so we can provide the highest quality care in a timely, affordable fashion. To schedule an appointment, please call us at (516) 626-1971 or email intake@northshorechildguidance.org

Guidelines

FALL 2022

Editorial Director: Lauren McGowan

Editor/Writer: Jenna Kern-Rugile

Contributor: Nicole Oberheim

Designer: Elizabeth S. Hildebrandt, Inc.



Donor Profile: National Grid

nationalgrid



Kathy Wisnewski

While financial donations are crucial to making our work at the Guidance Center possible, there are several other ways to contribute to our lifesaving mission.

Case in point: our wonderful community partners at **National Grid**, an electricity, natural gas and clean energy delivery company serving more than 20 million people across New York and Massachusetts.

Kathy Wisnewski, Long Island Regional Director, Community Customer Management, says that National Grid has a long and proud history of volunteerism. “We’ve always been dedicated to having an impact on the communities where we live and work,” she says.

Project C

Though National Grid’s volunteer efforts at nonprofits, parks, businesses and other locations have been going on for many years, the utility officially launched what it calls “Project C” in 2021.

According to Wisnewski, Project C is designed to go beyond the utility’s work in the energy sector and to inspire positive change, create positive impact in our neighborhoods and strengthen communities for years to come.

In addition to volunteerism, Project C focuses on four key priorities: clean energy and sustainability; workforce development; neighborhood investment and community engagement; and environmental justice and social equity.

Inspiring Future Leaders

The Guidance Center’s partnership with National Grid began in February 2019, when we hosted a Career Day at Nassau B.O.C.E.S. High School in Wantagh.

Juan Santiago, National Grid Customer and Community Manager, won over the students, sharing that he wasn’t that interested in academics as a youth but found his way with a little faith and hard work. “Just because someone doesn’t take a traditional route doesn’t mean they are any less motivated,” he told the audience. “There are many paths to success, and if you put your hearts and minds into it, you can do anything!”

Our next collaboration took place that March, when National Grid employees Sarah Kahrs and Paula Gendreau generously donated their time and expertise to coach students in a Mock Interview Day at Nassau B.O.C.E.S.

“This event was an incredible experience,”



A dedicated group of National Grid employees (pictured here with Guidance Center staff) did an amazing job sprucing up our Nature Nursery.

says Kahrs. “It was so exciting to be able to take an active role in helping these young adults prepare for their future.”

Gendreau adds, “I was impressed by all the positive energy! I was fortunate to meet some great candidates, and it was my pleasure to be part of a wonderful day.”

As spring 2019 arrived, we welcomed seven National Grid employees to our Leeds Place in Westbury, where they spent the day planting flowers and painting our signpost, giving the building a fresh, friendly look.

Fran DiLeonardo, Director, IT Customer Service Management at National Grid, enthusiastically put his all into the project. “It was another great day making a difference in the community that we live

and work in,” says DiLeonardo. “It’s always rewarding to put the time aside and make it happen; that’s why we keep coming back!”

The Guidance Center was chosen for Project C this year by National Grid’s Alexandra Paoli, who was the onsite leader for the Day of Service at our **Nature Nursery at the Marks Family Right from the Start 0-3 + Center** (see cover story). She had learned of our mission through her mother, Michele Paoli, who has been with the utility for 25 years. The mother-daughter team, along with several other National Grid volunteers, worked cheerfully and with gusto during the day-long beautification project.

“My mother knew about the great work of the Guidance Center,” says Alexandra. “When she suggested it be one of the sites of our statewide volunteer initiative, it was a natural choice.”

National Grid also donated \$1,000 for art supplies that will be used in the Nature Nursery and Right from the Start programs.

Making a Difference

Wisnewski credits National Grid’s staff for their devotion to the neighborhoods in which they live, work and raise their families. “Many of our employees have their own relationships with organizations in the community. Year-round, they do such remarkable things

and make a real difference.”

National Grid plans to be back at the Guidance Center in 2023 for the next Project C Day of Service. “We know mental health is so important to all in our community, and it’s key to have places like the Guidance Center to help families and children on Long Island,” says Wisnewski. “National Grid is dedicated to investing in our youth, and we want to make sure we are doing everything we can to support the mental health of the next generation of leaders.”

We are so grateful to our friends at National Grid, and we’d love to partner with your company! Contact Lauren McGowan at 516-626-1971, ext. 320, to discover ways to help.

Staff Profile: Maria Espichan, Special Events Coordinator

When Maria Espichan was a student at SUNY Oneonta, her passion for creating fundraisers to support worthwhile causes had already begun when, as the president of her sorority, she organized a gala fundraiser for St. Jude Children's Hospital.

"It was such a fun event," says Espichan, who received her bachelor's degree in business economics with a marketing concentration in 2019. "The students, who were of very diverse backgrounds, loved getting dressed up and coming together to make a difference for children battling cancer. And it made me realize that this was something I could do to make the world a better place."

As the Special Events Coordinator at the Guidance Center, Espichan's talent for creating major fundraisers – our Spring Luncheon, Krevat Cup and Sunset Soirée, as well as many other events – is on full display.

"There are so many moving parts when it comes to putting together an event,



Espichan is a travel buff who recently visited Paris and Rome.

and Maria pulls it off beautifully every time," says Lauren McGowan, Director of Development. "Her commitment to our mission is strong, and she is an incredible asset to our department and the agency as a whole."

Though her duties organizing and running events keeps her very busy, Espichan, who was born in Peru but grew up in Roslyn from the age of two, has taken on other responsibilities that make her an incredible asset to the agency. She is a skilled graphic designer, and is the creative force behind our invitations, posters and other marketing materials. She also has accompanied the Latina Girls Project on some of their monthly outings (see story, page 11).

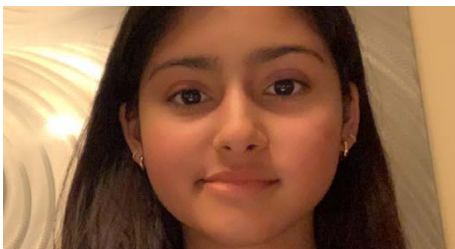
"I'm proud to know that, through my work to help raise funds for the Guidance Center's important mission, I'm contributing to the welfare of my own community in Nassau County," says Espichan. "It feels very good to know that what I do has a positive impact on children and families."



Jack Thomas, Elena Rios, Monica Doyley and Rachel Samuel



Krishna Advani and Shifa Ali



Ritika Bhattarai

Volunteer Profile: Children's Center Interns

In late June, North Shore Child & Family Guidance Center celebrated the reopening of our Children's Center at Nassau County Family Court, which returned after a pandemic-related closing (see page 11).

For us to provide the safe, nurturing early learning environment that is the hallmark of the Children's Center at Nassau County Family Court, we count on dedicated volunteers to partner with staff members at the site in Westbury. This summer, we had five wonderful college students who interned for the Children's Center: Jack Thomas, Rachel Samuel, Ritika Bhattarai, Krishna Advani and Shifa Ali. They worked side by side with the program's staff, head teacher Monica Doyley and assistant teacher Elena Rios.

Dr. Nellie Taylor-Walthurst, who heads up the program, expressed praise for the six interns. "These students were absolutely wonderful with all the children, who range

from babies all the way up to 12-year-olds," she says. "Their hard work and dedication fulfilled our promise to not only care for these children, but to provide them with an educational experience."

Ritika Bhattarai, one of the interns, says she loved volunteering. "In just four weeks I was able to participate in various activities, from spending afternoons with children reading, doing puzzles and playing board games to being creative with art." She also expressed gratitude to the Guidance Center team, who she says "makes the process of becoming a volunteer simple yet rewarding. I'm looking forward to volunteering again next summer!"

Intern Rachel Samuel adds, "I loved getting to play and learn from the kids, and see the joy on their faces when they play here and get a gift [when they head home]. It is so comforting to know that while families may have difficult court business to take care of, there is a space for kids just to be kids and enjoy themselves."

If you'd like to volunteer at the Children's Center at Nassau County Family Court and are 16 or older, contact Dr. Taylor-Walthurst at 516-997-2926, ext. 229.

Fundraising Events

A Milestone Anniversary of the Krevat Cup!



Troy Slade, Dan Oliver, Michael Schnepfer, Mike Mondiello, Dan Donnelly, Jeff Krevat and Kathy Rivera

It was a picture-perfect day as the Guidance Center celebrated the 25th anniversary of the Jonathan Krevat Memorial Golf & Tennis Classic at Engineers Country Club in Roslyn Harbor on June 6, 2022.

Thanks to our guests and sponsors, we raised \$150,000 to support our work. More than \$25,000 in additional funds were raised for our **Douglas S. Feldman Suicide Prevention Project**, a lifesaving initiative that launched in September 2020.

This year, the event honored Jeff Krevat, founder of the Krevat Cup, which is named in honor of his brother. “The mission of the Guidance Center is more important than ever before, with children and teens suffering from serious mental health challenges,” said Krevat. “I am grateful to my friends

and family for coming out to honor my brother’s legacy and support an organization that makes a real difference for the kids in our community.”

This year’s guest speaker was Rachel Priest, a mental health professional who was a Guidance Center client in her teen years. She told the audience, “The care I received from the Guidance Center saved my life. I was able to accomplish wonderful things over the years because of the dedication, skills and compassion of my Guidance Center therapists.”

Once again, the co-chairs for this year’s Krevat Cup were Board Members Michael Mondiello, Dan Oliver, Michael Schnepfer and Troy Slade. In addition, Dan Donnelly served as the event’s emcee and auctioneer extraordinaire.

“It’s all about the kids,” said Donnelly, a previous Krevat Cup honoree. “I consider it a privilege to be here today to help raise money to support the incredible work that truly makes a difference in the lives of children and their families.”

We are grateful to the Krevat Cup’s sponsors: **Susan and Jeff Krevat, Americana Manhasset, Aon Reinsurance Solutions, Dan Donnelly, PSEG Long Island, Bahnik Foundation, Susan and Peter Braverman and the Klipper Family Foundation.**



Steve Kessler, Jeff Krevat and Ryan Rosenberg



Cathy Castagna, Rita Castagna, Bob Ronzoni and Nina Ronzoni



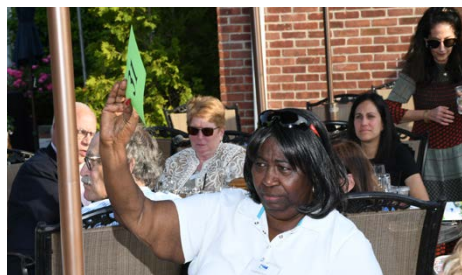
Jeff Greenblatt, Brian Litvack, Brett Goodman and Jon Hillman



Jennifer Rush, Kathy Rivera and Jeff Krevat



Jo-Ellen Hazan, Jeff Greenblatt, Linda Seaman, Troy Slade and Nancy Lane



Josephine Ewing



Nancy Leber, Susan Krevat, Debbie Epstein and Katy Kamen

Fundraising Events

Kenny G Graces our Gala!



Kenny G and Kathy Rivera

As promised, the sunset was a stunner at our Sunset Soirée, which raised nearly a quarter million dollars to fund our lifesaving programs!

The event, held at the Manhasset Bay Yacht Club on September 8, 2022, featured a very special guest: Grammy-winning saxophonist Kenny G, whose appearance was a birthday gift to Board Member Andrea Leeds from her husband Michael and the rest of her family, all of whom were in attendance to celebrate the magical evening.

“It was an amazing experience to have our first in-person gala in three years graced by the incredible talents of Kenny G,”

says Andrea Leeds. Andrea and Michael, along with Nancy and Lew Lane, were proud to serve together as this year’s co-chairs. “Everyone in the room, from my two young grandsons to the Guidance Center’s longtime supporters, were moved by the smooth, soulful sounds. I’m so grateful to Kenny G for making the Sunset Soirée a spectacular night that will long be remembered.”

Samantha Sutfin-Gray, a former client of our **Diane Goldberg Maternal Health and Wellness Program**, shared the story of her bout with postpartum depression, which impacts one in seven women. “I can’t even imagine where I would be or how far my suffering would have taken me if I hadn’t sought treatment. The Guidance Center was with me every step of the way. For that, my family and I are eternally grateful.”

Guidance Center Executive Director/CEO Kathy Rivera told the guests, “I am so proud of the dedication of our team, from our frontline mental health care staff to our front-desk staff and everyone in between. The reason we have been able to bring hope and healing to the community for nearly 70 years is thanks to them, and to all of you who support our mission.”

Special thanks to the night’s emcee, Stacey Sager of Channel 7 Eyewitness News, and our sponsors: **the Leeds Family; Maureen and John Ferrari; the Ike, Molly & Steven Elias Foundation; WABC-TV; Jane and Martin Schwartz; the Jack & Dorothy Kupferberg Foundation; Americana Manhasset; the Klipper Family Foundation; Marilyn and Russell Albanese;** and **Cerity Partners.**



Kathy Rivera, Lisa Corleto, Sarah Diaz, Valentina Coreas, Evelyn Turcios, Kadene Whitehead and Jennifer Rush



Kenny G playing to Andrea Leeds



Maggie Malito, Gisele Kehl and Rita Castagna



Michael Leeds, Andrea Leeds, Kenny G, Nancy Lane and Lew Lane



Troy Slade, Rita Castagna, Ruth Fortunoff Cooper, Amy Cantor, Alexis Siegel, Carol Marcell, Marilyn Albanese and Jeff Greenblatt



Paul Vitale and Kenny G

Fundraising Events

Springing Forward!

One of our most popular fundraisers returned to the Glen Head Country Club in late April after a two-year pandemic pause as we hosted our Spring Luncheon. We raised more than \$77,000 thanks to your support!

While the 2021 online luncheon's success was due to the dedication of longtime co-chairs Jan Ashley, Amy Cantor and Alexis Siegel, our supporters were eager to join together in person to celebrate our work and raise funds for our mission.

The day began with Mahjong and Canasta, along with unique shopping boutiques from some of Long Island's trendiest and most charitable small business owners, including Anatomie, Bonnie's Nuts, Chintz Giraffe, Dale's Novelty Knits, Daniella Erin NYC, DASH, Meryl Roesch Sunglasses, Designs that Donate, Freida Rothman Jewelry, Funky Tykes, Roadie Couture, Simply Splendid, Tall Order and Transitions.

Keynote speaker Nassau County Legislator Josh Lafazan told the audience, "Seeking help can be a truly daunting step for a family to take when

they are confronted with a mental health challenge. The incredible work of the Guidance Center has been instrumental in combating stigma by delivering the counseling and therapeutic resources that help young people blossom and thrive. It continues to be my great privilege to work in partnership with an outstanding organization whose efforts are more essential than ever in our community."

Thank you to our generous sponsors **Ruth Fortunoff Cooper; Farrell Fritz, P.C.; Americana Manhasset; Nancy and Lew Lane; the Klipper Family Foundation; Amy and Dan Cantor; Joan Grant; the Kupferberg Orlando Team at Douglas Elliman; NYU Langone Hospital – Long Island; Alexis & Howard Siegel; Signature Bank – Garden City; South Oaks and Zucker Hillside Hospitals – Northwell Health; Jan Ashley; Fara & Richard Copell; Stephanie and Ian Ginsberg; Dorothy Greene; New York Community Bank; Michelle S. Russo P.C.; DeMatteis Family; Janni and Associates Inc.; and Cynthia Rubinberg.**



Kathy Rivera, Alexis Siegel, Jan Ashley and Amy Cantor



Maureen Ferrari, Joanne Sexton, Jo-Ellen Hazan and Toni-Ann Nahas



Joan Grant (second from right) with friends at our boutiques



Amy Cantor (second from right) plays Mahjong with friends



June Levine (right) enjoying Canasta with her guests



Sandra Weingarten, Ruth Fortunoff Cooper and Michele Cagner



Guests buy their raffle tickets for Americana Manhasset's gift card



John Zenir, Kathy Rivera and Josh Lafazan



Reena Nandi, Josephine Ewing and Kathy Rivera

Inside Our Center

A Real Rush!

In June 2022, we welcomed a great addition to our senior management team: Jennifer Rush, our new Associate Executive Director, who relocated from the Berkshires to join our staff!

Rush has a diverse operations background in medical, educational and community-based services, including hospital and substance abuse settings. Most recently, she was the VP of Residential and Clinical Services at Berkshire County Arc in Massachusetts, where she oversaw all residential services.

“With more than 28 years of leadership experience in nonprofit, residential and health care settings, Jennifer has extensive experience working with adults, children and families in mental health and substance use,” says Kathy Rivera, Executive Director/CEO. “Her impressive level of knowledge, skill and expertise sets the stage for our continued growth and expansion and will help strengthen our services across the agency.”

In a short time, Rush has felt right at home on Long Island and at the Guidance Center. “I am excited to find ways to further support the agency’s goal of bringing hope and healing to children and families,” she says. “I am also eager to support the Guidance Center’s incredibly dedicated employees who provide their clients with compassionate, high-quality services that truly save lives.”



Jennifer Rush, Associate Executive Director

Michael Schnepfer Joins Board



Michael Schnepfer

The Guidance Center is thrilled to announce that longtime supporter Michael Schnepfer has joined our Board of Directors!

For nearly a decade, Schnepfer has served as co-chair of one of our most important fundraising events, the Jonathan Krevat Memorial Golf & Tennis Classic.

“We feel extremely fortunate to have Michael joining us,” says Paul Vitale, Board President. “He has been a vital force in making the Krevat Cup a huge success year after year, and he approaches the role with enthusiasm, creativity and a wonderful sense of humor. We have no doubts that he will bring that spirit to his work on our Board.”

“It’s a real privilege to become part of the dynamic team at the Guidance Center,” says Schnepfer, a Partner in Rivkin Radler’s Commercial Litigation, Insurance Coverage and Insurance Fraud Practice Groups. “The past few years have been an enormous challenge for the kids and families of Long Island, making the need for compassionate, expert mental health services more important than ever before. I look forward to working with the dedicated Board Members who give so much of their time and devotion to this amazing organization.”

Guiding the Next Generation



Interns Ashley Baierlein, Daniel Settle, Grace Sciretta and Noel Mahabir at our Roslyn Heights headquarters Meet and Greet

The Guidance Center has a long history of serving as the training ground for the next generation of social workers. From September 2022 through August 2023, nine social work graduate students will be interning with us, learning from our expert team the skills needed to provide high-quality mental health care to our community.

On September 12th, four of those nine interns came to a Meet and Greet at our Roslyn Heights headquarters, and they were welcomed by many of our supervisors and other Guidance Center staff with whom they will be working. “When I toured the Guidance Center, I fell in love with all the great work you do, not just with individual clients but also with groups and families,” says Hofstra student Noel Mahabir.

“Dee” Nendler Michel, Director of Clinical Services who oversees our intern program, says the scope of mental health has changed dramatically over the past few years, along with the need for mental health services. “These students bring an enthusiastic attitude and a desire to learn to their internships at the Guidance Center, and in time they will become a valuable asset to many families in need. We are happy to help foster that growth.”

If you’d like to learn more about our internship program, contact Michel at 516-626-1971, ext. 257.

Celebrating the Team!

The sun shone bright at the Staff Appreciation Day at the beautiful backyard of our Roslyn Heights headquarters on August 15th.

Team members from all our locations joined together for an afternoon of camaraderie, conversation and delicious lunch and desserts, which were brought in by staff members.

Human Resources Director Kiera Cohen's brother Remy Watts, owner of food truck Cultured LB, graciously donated delicious smoothies for our staff to enjoy.

"This was a wonderful team-building activity that was enjoyed by all," says Jennifer Rush, Associate Executive Director. "Because we work in three office locations and three schools, we don't get many opportunities to come together, but the success of this day guarantees it will become an annual tradition!"



Honoring a Son Lost to Suicide



Donald, Matthew and Ellen Feldman

Two years ago, we launched one of our most important programs ever: the **Douglas S. Feldman Suicide Prevention Project**, named in honor of the son of Ellen and Donald Feldman.

On October 19, 2022, the Guidance Center welcomed the Feldmans, their son Matthew and other treasured guests to our Roslyn Heights headquarters for the celebration of our Butterfly Wall, which features lovely brass butterfly plaques recognizing generous donors to this initiative.

Elissa Smilowitz, Director of Emergency, Triage & Suicide Prevention Services, says that suicide is the second leading cause of death for ages 10-24, with more teenagers and young adults dying from suicide than from cancer, heart disease, birth defects, stroke, pneumonia, influenza and lung disease combined.

"It is truly an epidemic," says Smilowitz, adding, "The Feldman's generous gift has allowed us to make a real difference in the lives of so many young people."

Ellen Feldman says the **Douglas S. Feldman Suicide Prevention Project** has been instrumental in the journey her family has been on since the loss of her beloved son.

"Very soon after Doug died, Donald and I knew we wanted to do something that would prevent this tragedy from happening to other families," she says. "I grew up in this community and raised my children here, so having the Guidance Center as the beneficiary of our donation to help young people who are struggling with suicidal thoughts made perfect sense."

She adds, "I'm so proud of the work being done by the Guidance Center. They are truly saving lives, and I can't imagine a better way to honor our son."

To learn more about the Butterfly Wall and how you can support the **Douglas S. Feldman Suicide Prevention Project**, contact Lauren McGowan at 516-626-1971, ext. 320.

A Legacy of Philanthropy

On April 25, 2022, we welcomed the families of some of our most devoted supporters to participate in the recognition of our Legacy Wall of Respect, which commemorates those who created a lasting legacy by donating to us upon their passing.

Family members Judith Cohart, Catherine and Rita Castagna, Esther Fortunoff and Ruth Fortunoff Cooper joined Board Members Marilyn Albanese and Nancy Lane, along with Executive Director/CEO Kathy Rivera and Director of Development Lauren McGowan, at the ceremony. The honorees were **Frank Castagna, Beatrice Cohart, Helene Fortunoff, David Katz, Marion Kunreuther, Marie Rautenberg** and **Roslyn Younger**, all of whom are commemorated with an elegant plaque at Whispered Wishes, our Roslyn Heights headquarters.

"These generous people were among our most devoted donors and friends," says Rivera. "While all of them made an extraordinary bequest that will help the Guidance Center continue in our important work, we are truly celebrating their many years of dedication and commitment during their lifetimes."

To learn more about legacy giving, contact McGowan at 516-626-1971, ext. 320, or email LMcGowan@northshorechildguidance.org.



Catherine and Rita Castagna, Esther Fortunoff, Judith Cohart, Ruth Fortunoff Cooper, Marilyn Albanese, Kathy Rivera and Nancy Lane

Annual Meeting Returns!



Ashley Wander, Dominique Zummo, Nicole Iadevaia, Staff Honoree Dr. Simran Bagga and Dena Papadopoulos

The Guidance Center welcomed staff, board members and esteemed honorees to our 69th Annual Meeting, held on June 14th at Westbury Manor. The event had been sorely missed for the past two years as the pandemic prevented this always-joyful celebration.

This year's honorees, who received awards for their dedication to our work and mission, were NY State Senator Anna Kaplan, Community Advocate; Ellen and Donald Feldman, Mental Health Champions; Doug Stern,

Community Partner; and Marisa Padgett, Dr. Simran Bagga and Dollicia Torres, staff members who were given our Circle of Excellence award.

Board member Jo-Ellen Hazan presented the slate of Board Members, announcing the naming of Troy Slade to Vice President, Mary Margiotta as Treasurer and Michael Schnepfer as a new Board Member. Our generous supporter John Zenir Esq. read the oath of office and swore in the Board.

"These honorees make our work with children and families in our community possible," says Kathy Rivera, Guidance Center Executive Director/CEO. "They are real champions, and our gratitude to each and every one of them is boundless."

Many thanks to our Board of Directors for underwriting the cost of staff for this wonderful event!

To learn how you can become part of the Guidance Center family, contact Lauren McGowan at 516-626-1971, ext. 320.

Childhood depression is more likely to persist into adulthood if gone untreated.



Betty Hylton, Rosemarie Klipper and Marian Williams



Brianna Buonauro, Staff Honoree Dolly Torres and Alexandra Nicholson



Elissa Smilowitz, Staff Honoree Marisa Padgett, Kenneth Padgett and Kathy Rivera



Paul Vitale, Carol Marcell, Andy Marcell, Marilyn Albanese and Russell Albanese



Shari Bushansky, Melissa Merman, Paul Danilack, Yvonne Novy-Cutler and Ashley Kelly



Troy Slade, Josephine Ewing, Michael Schnepfer, Rita Castagna and Daniel Oliver

Working in the Community

Caring for Kids at the Courthouse



Dr. Nellie Taylor-Walthrust, John Aiken, Kathy Rivera, Ellen Greenberg and Rosemarie Klipper at the reopening ceremony

After a two-year pandemic-related hiatus, we celebrated the reopening of our Children's Center at Nassau County Family Court, which provides care and early learning to children while their parents or guardians are conducting court business such as divorce and custody cases.

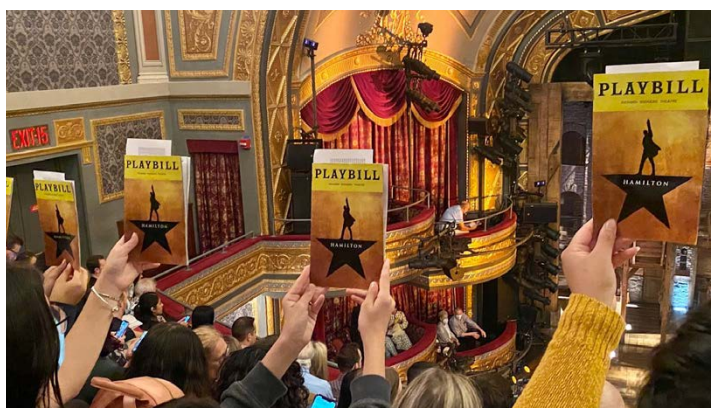
At the June 21st ceremony, Dr. Nellie Taylor-Walthrust, Director of the Guidance Center's Leeds Place, told the guests, "The Children's Center is a safe haven that allows children the opportunity to develop early learning skills through age-appropriate play and activities that are fun and exciting. Now that families have returned to the court, it's essential that children come to the Children's Center so they don't have to witness potentially contentious interactions among their family members."

The Children's Center is especially close to Laurie Joseph-Yehuda's heart, since it was founded by her father, the late Honorable Burton Joseph. "The reopening of the Children's Center is so important," said Joseph-Yehuda, a member of the Children's Center Advisory Council. "It gives children a place to come to be enriched, to learn and to be cared for."

Family law attorney John M. Zenir, one of the Children's Center's most dedicated supporters, said, "The reopening means kids can be safe, away from the stress and strain that's going on between their parents. They can have a snack, read a book or play a game. In other words, just be a kid—what could be better!"

This vital program is made possible by all our generous donors. Thank you for caring for kids!

Give Their Regards to Broadway



High spirits were all around as the teens awaited the opening curtain at *Hamilton*!

Our generous donors **John and Janet Kornreich** sponsor trips for the teens from our Latina Girls Project that help open their eyes to the possibilities in the world around them and help foster friendships, self-esteem and hope. This summer, the girls had the once-in-a-lifetime experience of seeing *Hamilton* on Broadway, and they were in awe! Thank you John and Janet for making dreams come true for our clients!

Healing Through Nature



Hiking helps teens bond with each other and gain a sense of mastery

Through our Wilderness Respite Program, teens with challenging issues such as anxiety, depression and social isolation undergo transformative growth through hikes in natural settings, where they learn they are capable of far more than they'd ever imagined.

"Our hikes provide a therapeutic outlet for our participants as it gives them a safe space to communicate with their peers and the staff," says the program's co-leader, Gillian Uhl.

The Wilderness Respite Program has been bringing healing to young people for more than two decades! If you are interested in supporting our life-changing work, call Lauren McGowan at 516-626-1971, ext. 320. Thank you!

Standing with the Community

A Night to Remember



Kathy Rivera, Legislator Siela Bynoe, Jennifer Rush and Dr. Nellie Taylor-Walthrust

This summer, the Guidance Center was honored to be one of the sponsors of National Night Out, an annual community-building campaign that fosters police-community partnerships and neighborhood camaraderie to make our towns safer, more caring places to live.

Our own Dr. Nellie Taylor-Walthrust has been instrumental in organizing National Night Out's Westbury festivities for many years. "The Guidance Center is proud to serve the Westbury/New Cassel neighborhoods at our Leeds Place location," says Taylor-Walthrust. "We are an integral part of this culturally rich, vibrant community, along with our partners in government, law enforcement, schools and other vital resources."

Guidance Center Associate Executive Director Jennifer Rush, who took part in the event for the first time, says, "It was inspiring to see the many individuals and organizations that serve the area come together for a night to celebrate this dynamic community. I look forward to next year's National Night Out!"

Tackling the Suicide Epidemic



Marisa Padgett

Suicide among youth is at crisis levels, and the Guidance Center aims to stem the tide of this epidemic with our **Douglas S. Feldman Suicide Prevention Project**. This innovative program

addresses high-risk cases with a thorough evaluation for suicide risk; individual,

group and family therapy; and an individualized treatment plan that focuses on safety strategies and healthy coping skills. As part of those efforts, Marisa Padgett, Clinical Supervisor of Emergency Triage & Suicide Prevention Services at the Guidance Center, spoke at the Nassau County Youth Wellness Summit at Brookside School in Merrick last spring.

If your organization, school or other entity is interested in hosting a speaking engagement with one of our experts, please contact Lauren McGowan, 516-626-1971, ext. 320.

We ♥ Westbury!



Dr. Nellie Taylor-Walthrust (third from left) with Westbury leaders

The Westbury/New Cassel NAACP, in collaboration with the Westbury School District Guidance Department, held a Mental Health Conference in late April, where our Leeds Place Director Dr. Nellie Taylor-Walthrust was invited to share information on our services for local children and families.

We are proud to be here for Westbury and all the communities in Nassau County!

Spotlight on Mental Health



Maria Espichan, State Senator Anna Kaplan and Lauren McGowan

Port Washington put a spotlight on the well-being of its residents at the Project Mental Health Awareness March on May 14th. The Guidance Center was well represented as Director of Development Lauren McGowan and Special Events Coordinator Maria Espichan shared information on our programs with attendees to this special event.

Celebrating the ADA



Lauren McGowan and Nassau County District Attorney Anne Donnelly

In July, the Guidance Center took part in the celebration of the 32nd anniversary of the Americans with Disabilities Act at the Nassau Courthouse, hosted by our good friends at the Viscardi Center. Director of Development Lauren McGowan and Director of Communications Jenna Kern-Rugile supplied information to the audience about our programs and services for all Nassau County towns.

Standing with the Community

Vital Resource for College Students



Marilyn Albanese and Lauren McGowan

Guidance Center Board Member Marilyn Albanese and Director of Development Lauren McGowan represented the Guidance Center at the LIU Center for Healthy Living's Mental Wellness Resource Fair, for which we were a featured sponsor. Thank you to Long Island University for hosting this important event!

A Leadership Corral

The Guidance Center's Associate Executive Director Jennifer Rush joined with other leaders of some of Long Island's most prominent not-for-profit organizations at a gathering hosted by the Nonprofit Resource Hub in September. At the meeting, held on the beautiful grounds of HorseAbility in Old Westbury, we were pleased to see NAMI Nassau/Queens Executive Director Liz Hildebrandt, along with Linda Beigel Schulman, who spoke at our 2018 gala.



Liz Hildebrandt and Jennifer Rush

Supported by the Community

Thank You Plandome Woman's Club!



Lesley Stackler, Lauren McGowan, Kathy Rivera and Jill Ridini

We are so grateful to the Plandome Woman's Club for their generous donation in support of our lifesaving work. Special thanks to Lesley Stackler, the club's President, and Jill Ridini, Grants Chair, for their warm welcome at their July meeting.

Back to School in Style



Some happy teens with their new backpacks!

Just ahead of the new school year, our friends at the Sid Jacobson Jewish Community Center once again donated 100 backpacks to the families we are privileged to serve in our Westbury Leeds Place office. "This generous annual donation means a lot to our families," says Dr. Nellie Taylor-Walthrust, Director of the Leeds Place. "We feel blessed for the kindness of the Sid Jacobson JCC, and especially the Fine family who delivered them to our doors!"

Supported by the Community

A Bounty of Giving



Joyful smiles filled the room at the Church of Advent

We are very thankful to the members of the Church of the Advent in Westbury for their generous donation of gift cards for our C-GRASP grandparents and our Good Beginnings for Babies clients to help children have the supplies they need to return to school.

The Church of Advent has been a long-time supporter of the Leeds Place, our Westbury office, for many years. We appreciate their kindness! Thanks also go to our staff member Marmeline Martin and her husband Louis M. Pierre for bringing the gift recipients to the church's September 11th service to receive their gift cards.

To learn more about how you can help the families in our community who are in need, especially this time of year, contact Lauren McGowan, 516-626-1971, ext. 320

Meeting the Commish



Kathy Rivera and Mary T. Bassett

Thanks to our friend and supporter Ellen Labita, Partner and Team Leader at Baker Tilly, our Executive Director/CEO Kathy Rivera and Director of Development Lauren McGowan met with Mary T. Bassett, Commissioner of the New York State Department of Health, at a May 2022 Long Island Association meeting. Bassett spoke about a variety of pertinent health concerns at the event, which was hosted by the LIA's health, education and nonprofit committee.

Says Rivera, "You can count on the Guidance Center to play a central role in the ever-evolving discussions on health-related issues in our state."

Toy Foundation Donation



We are very fortunate that our Board President, Paul Vitale, is the Executive Vice President, Finance & Operations at the Toy Association. This past April, their philanthropic arm, the Toy Foundation, donated several wonderful items, including an LOL Chalet that was used for silent auction prizes at our major fundraisers. We are so grateful for the partnership of the Toy Foundation and for the dedication of our Board President!



Linda and Alan Hirschhorn were the lucky winners of the LOL Chalet at our Krevat Cup

A True Warrior!



Joy Williams, Dr. Nellie Taylor-Walthrust and Donnette Scott

On April 30, 2022, Dr. Nellie Taylor-Walthrust was honored as a Health Justice Warrior at the SoulJoy Wellness Self-Care Saturday at Memorial Presbyterian Church in Roosevelt. She was recognized for her work as the co-founder of Birth Justice Warriors, which works to eradicate the inequity in infant and maternal mortality in Black communities on Long Island.

And the Winner Is...

The Guidance Center is proud to have been named the Best Mental Health Care Facility on Long Island in the Long Island Business News 2022 Reader Rankings!

"Our continual focus is on bringing compassionate, high-quality mental health care to the children and families of Long Island," says Kathy Rivera, Executive Director/CEO. "Our mission has never wavered, and we are grateful to the readers of LIBN for this honor."



Outreach to the Community

Combatting Stigma



Lisa Corleto, Yvonne Novy-Cutler, Paul Danilack, Shari Bushansky, “Dee” Nendler Michel and Jennifer Rush

In early October, “Dee” Nendler Michel, our Director of Clinical Services, spoke at Families Together New York State’s conference, presenting on “Recognizing Substance Use & Mental Health Symptoms in Children, Teens and Young Adults.”

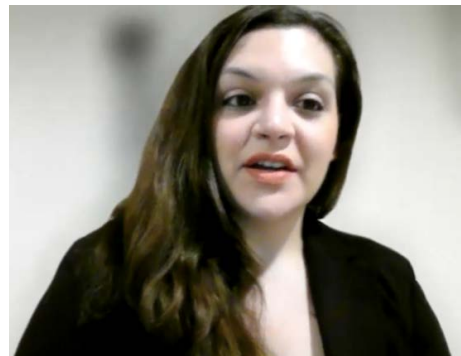
“Feeling stigmatized by addiction and mental health can reduce a person’s willingness to seek treatment,” says Michel. “The goal of this presentation was to help providers and parents see that our own views directly impact the ability to treat and seek out help for those in need.”

Treating Addictions of All Kinds



We continued our partnership with the Manhasset Coalition Against Substance Abuse (CASA) in June 2022 when Guidance Center therapist Lisa Corleto appeared on a webinar addressing the rise in gambling, online gaming addiction and substance use among young people.

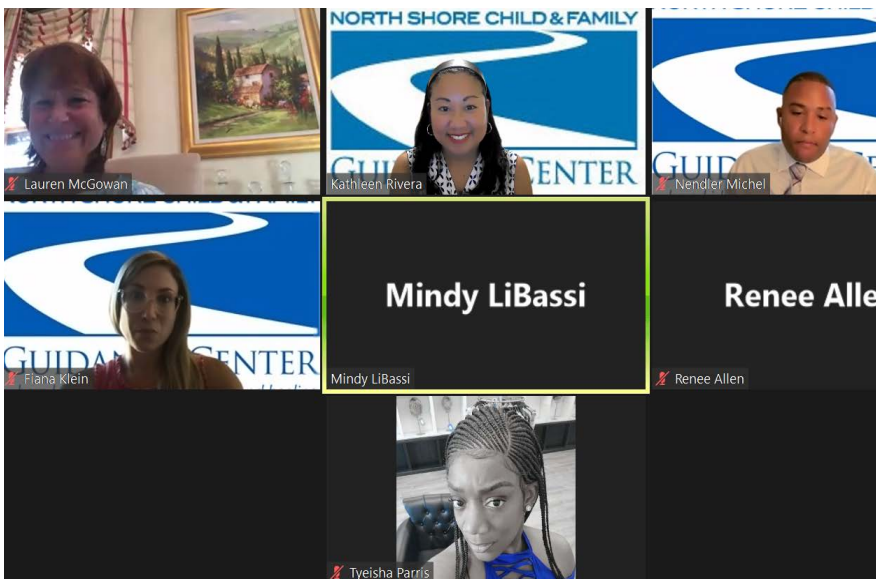
“Gambling triggers the same mechanisms in the brain as do other addictions,” says Corleto, adding that the pandemic isolation led to any increase in many addictive behaviors. The Guidance Center has developed a screening tool used during the intake process to explore these connections.



The Guidance Center treats a variety of addictions with our Adolescent Outpatient Chemical Dependency Treatment program at our Westbury office. Call 516-626-1971 for help.

Lisa Corleto

Sharing Our Knowledge



Our clinicians on an August webinar

Beginning last May and wrapping up in August, the Guidance Center held four webinars for parents and educators of Western Suffolk B.O.C.E.S. as part of a grant we received through My Brother’s Keeper. The topics included substance use’s impact on families; suicide prevention; anxiety and depression; and preparing your child for school.

The Guidance Center’s expert clinicians offer workshops, either in person or via webinars, on a wide range of mental health subjects related to children and families. Contact Lauren McGowan at 516-626-1971, ext. 320, to learn more.

Outreach to the Community

Help Wherever It's Needed



Kathy Rivera, "Dee" Nendler Michel and Paul Danilack

At a Nassau County Office of Mental Health Town Hall on June 16th, Paul Danilack, supervisor of our community- and home-based services, gave a presentation on what is available to children and families who are in need of additional support. Kathy Rivera, Executive Director/CEO, and "Dee" Nendler Michel, Director of Clinical Services, also attended the conference, which was designed for both mental health professionals and community members.

"Many children need extra help at home, at school or in the community, and we bring our services where and when they are needed," says Danilack. "With our free services, we provide in-home therapy and case management to coordinate all your appointments and special services, as well as a family advocate."

To learn more about these programs, call 516-626-1971, ext. 303.

Parenting in a Pandemic

Last spring, Kathy Rivera, Guidance Center Executive Director/CEO, presented a workshop titled "Wellness in the Home: Navigating Parenting in a Pandemic" at Nassau County's 11th Annual Conference on Co-Occurring Disorders.

"Parenting in a pandemic has been challenging and can make keeping healthy routines and focusing on physical and emotional wellbeing a struggle," says Rivera.

"Parents often lack the tools or time to acknowledge and respond to parenting stress or practice self-compassion. The ability to remain in the moment and retain awareness of your place in the world has made it tough for families to keep a sense of calm."



Jill Nevin, Commissioner of Human Services, Kathy Rivera and Anissa Moore, Deputy County Executive of Health and Human Services

We are Family



Karen Buttner, Shari Bushansky and Yvonne Novy-Cutler

Paul Danilack, supervisor of our community- and home-based services, along with our family advocates Yvonne Novy-Cutler and Shari Bushansky, attended Long Island Families Together's 18th Breakfast Symposium,

which included other mental health organizations as well as legislators and family members.

Karen Buttner, the closing speaker, spoke about her lived experience as the parent of a child with mental health challenges. She is currently our new family advocate-in-training and will be joining our dedicated group of parents who've "been there" and provide in-home, community-based services to families at no cost. To learn more about the program, call 516-626-1971, ext. 303.

Strength in Diversity



Kathy Rivera with Jill Nevin, Nassau County Commissioner of Human Services

Executive Director/CEO Kathy Rivera was proud to be part of the planning committee for the annual Multicultural Awareness Conference in October. "It was a great opportunity to help develop workshops for professionals to provide trauma-informed services that acknowledge and integrate families' culture, values, beliefs

and practices," says Rivera. "This not only aligns with our mission, but also the work we do at the Guidance Center."

You Can Make a Difference

Other Ways to Give

With the holidays just weeks away, now is the perfect time to find great gifts for your family and loved ones while supporting the Guidance Center!

AMERICANA MANHASSET
**CHAMPIONS
FOR CHARITY®**

THURSDAY, DECEMBER 1 – SATURDAY, DECEMBER 3

The Guidance Center is excited to announce that we will once again be a beneficiary of Americana Manhasset's Champions for Charity®. On Thursday, December 1st to Saturday, December 3rd, more than 70 Americana Manhasset and Wheatley Plaza stores will donate 25% of designated full-price pre-tax purchases to nonprofit organizations, including the Guidance Center! For more info, visit championsforcharity.org.



GIVING TUESDAY On November 29th, participate in #GivingTuesday and make a donation in honor of the people on your holiday gift list. Their motto: Everyone has something to give, and every act of generosity counts! Visit our website to learn more.

amazon smile Any time you shop at Amazon, whether for the holidays, birthdays or any other occasion, use AmazonSmile and support the Guidance Center at no extra cost to you! Go to smile.amazon.com, log in and choose North Shore Child and Family Association as your charity of choice. Thanks for putting kids first!

Social Stars!



Charlotte Cooper



Alex Levitt

We had two incredibly talented college students interning with us this summer, helping with our social media strategy. A huge shout-out to Alex Levitt, a fantastic writer and researcher, and Charlotte Cooper, whose graphic designs made our pages pop!

If you have a flair for social media, be it writing great copy or creating graphics, we'd love to hear from you. Contact Director of Communications Jenna Kern-Rugile at 516-626-1971, ext. 377, or email jkern-rugile@northshorechildguidance.org.

P.S. Consider creating a fundraiser for us on Facebook or Instagram! Contact Jenna to learn how.

Your Lasting Legacy

The Guidance Center is so grateful to those who put us in their estate plans, like our dear friends highlighted on our Legacy Wall of Respect (see story, page 9).

You can make a lasting impact on the children and their families in your community by helping to secure their mental health with a legacy gift.

Ensure the wealth you have accumulated over your lifetime goes exactly where you want it to go and when. If you don't have a will or living trust, the state will impose a distribution plan for you, which may or may not match your wishes. Creating a bequest will give you the opportunity to state your intentions for your estate.

You aren't required to have accumulated enormous wealth to have an estate plan. It may sound very grand but it's actually simple, and it's a very smart investment in your values beyond your lifetime.

If you wish to learn more about how to make a planned gift of any kind, please contact Lauren McGowan, Director of Development, at 516-626-1971, ext. 320 or email her at lmcgowan@northshorechildguidance.org



NORTH SHORE CHILD & FAMILY
GUIDANCE CENTER
Where kids and families find hope and healing.

In the News

Our three major fundraisers were big news, along with informational and inspiring stories on children's mental health and wellbeing.

Newsday



In a moving first-person essay, Executive Director/CEO Kathy Rivera shared important advice to help parents know the signs of suicidal thinking in youth.



Rivera was also the main resource for a Newsday piece in print and on video about the shooting in Uvalde and how we can help our children process these horrific events.

Newsday's feature on maternal mortality and inequities in communities of color cited our Birth Justice Warriors collaboration with Hofstra University.

Our new Associate Executive Director Jennifer Rush was spotlighted in Newsday's "LI People on the Move."

Long Island Business NEWS

We were named the Best Mental Health Care Facility by LIBN's readers! See page 14.



LIBN also highlighted our Sunset Soirée fall fundraiser, announcing that we raised a quarter-million dollars for our mission. Pictured: Emcee Stacey Sager.

The weekly also covered Jennifer Rush's hiring as Associate Executive Director, our new board members Michael Schnepfer and Mary Margiotta and the reopening of our Children's Center at Nassau County Family Court.

ANTON MEDIA GROUP

Our monthly feature "Parenting Plus," written by our expert team, included stories on our work in homes, schools and the community; our Latina Girls Project; and our Children's Center at Nassau County Family Court, among others.



Our three major fundraisers – the Krevat Cup, Spring Luncheon and Sunset Soirée – merited major coverage in the latter part of 2022.

BlankSlate MEDIA

Our monthly "Ask the Guidance Center Experts" covered kindergarten readiness, helping kids manage divorce and other important topics.

National Grid's volunteer day at or *Right from the Start* location was prominently featured.



Blank Slate also covered our three fundraisers, our new board members, our new Associate Executive Director and our Children's Center news.

Social-izing

We continue to grow our audience on social media, providing mental health tips, news and some surprises!

A few highlights:

An Instagram reel created by our social media intern Charlotte Cooper got 6,000 views! Our thanks to the talented Ms. Charlotte!



Our weekly blogs ran the gamut from celebrating National Hispanic Heritage Month and BIPOC Mental Health Month to offering vital content on suicide prevention.

We also began a new twice-monthly feature called Staff Spotlights, which highlights one of our superstar employees!



Please join us on Facebook, Instagram, Twitter and LinkedIn!



In Honor, In Memory or to Celebrate

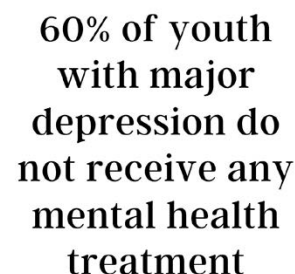
Gifts to North Shore Child & Family Guidance Center can be made to honor or remember a loved one or a friend, or to commemorate a special occasion. Make your donation online at www.northshorechildguidance.org or by mail to the Development Department, NSC&FGC, 480 Old Westbury Road, Roslyn Heights, NY 11577 or call (516) 626-1971 ext. 337 for more information. Don't forget to include your name and address and the name and address of the individual for whom you are making the donation.

In Honor Of

- Amy Cantor's Birthday** – Rosalie Cantor
- Martine Hackett** – Susan Witte
- Jo-Ellen Hazan** – Nancy Mazarin
- Rosemarie Klipper** – Jeffrey Halbreich
- Jeff Krevat** – Jay Kaufman; Elisabeth Krevat; Patricia and Alan Neuwirth
- Nancy and Lew Lane** – Susan and Mark Claster; Linda and Denis Cronin; Anne DePietro; Katherine and John Shutkin
- Andrea and Michael Leeds** – Matilde and Cliff Broder; Bonnie and Gary Goldberg; Tina Sanacore; Claudia and Norbert Wolloch
- Carol and Andy Marcell** – Theresa Buhse; Peder Moller; Mara and Nick Sarchese; Jennifer St. Germain
- Michael Mondiello** – Emmett Laffey
- Dan Oliver** – Leonard Kreppel
- Michael Schnepfer** – Steven Paston
- Troy Slade** – Eric Blumencranz; Ellen and Marc Blumencranz; Alan Kessler; Dana and Adam Wilkins
- Nellie Taylor Walthrust** – Susan Witte

In Memory of

- Gussie Lee Bunch** – Lawrence Schaffer
- Ed Byrnes** – Andrea and Michael Leeds; Marion and Irving Levine
- Sidney Farber** – Lisa Leibowitz
- Douglas S. Feldman** – Ilana Decker; Toby and Mike Gorelick; Eileen and Harold Maloff; Sandy and Alan Pensak; Marsha Witten
- Brianna Moore** – William Sylvia
- Dr. Reena Nandi's Parents** – Andrea and Michael Leeds
- Cleona and Sal Spano** – Paul Spano
- Marcy Tretler** – Richard Tretler
- Jason Daniel Witler** – Bonnie Witler
- Shepard Zinovy** – Linda and Mark Ugenti



60% of youth with major depression do not receive any mental health treatment

Grants

- The Bahnik Foundation** - \$10,000 for General Support
- Community Chest of Port Washington** - \$8,000 for General Support
- Peter & Jeri Dejana Foundation** - \$10,000 for General Support
- Ike, Molly & Steven Elias Foundation** - \$15,000 for General Support
- Glen Head Country Club's Charity Fund** - \$1,500 for General Support
- Diane Goldberg Foundation** - \$25,000 for Maternal Depression
- Greentree Foundation "Good Neighbor" Fund** - \$10,000 for Caregiver Grandparents Respite and Support Program (C-GRASP)
- Klipper Family Foundation** - \$15,000 for General Support
- The Jack and Dorothy Kupferberg Family Foundation** - \$25,000 for General Support
- Fay J. Lindner Foundation** - \$60,000 for Capital Improvements; \$75,000 for Triage and Emergency Services
- Nancy & Edwin Marks Family Foundation** - \$50,000 for Maternal Depression
- National Grid** - \$1,000 for art supplies for Nature Nursery and Right from the Start
- The Eleanor & Roy Nester Family Foundation** - \$10,000 for General Support
- Plandome Woman's Club** - \$2,000 for General Support
- Caroline and Sigmund Schott Fund** - \$10,000 for General Support
- Jane & Martin Schwartz Family Foundation** - \$5,000 for General Support
- Donald & Barbara Zucker Family Foundation** - \$5,000 for General Support

NORTH SHORE CHILD & FAMILY



GUIDANCE CENTER

480 Old Westbury Road
Roslyn Heights, NY 11577-2215
tel: (516) 626-1971
fax: (516) 626-8043
www.northshorechildguidance.org



@NSCFGC



the_guidance_center



NSCFGC



@NSCFGC



North Shore Child & Family Guidance Center



A Better
Business
Bureau
accredited
charity



This organization has earned
the GuideStar Exchange
Seal, demonstrating its
commitment to transparency.

Non-Profit Organization
US Postage Paid
Permit No. 271
Roslyn Heights, NY
11577-2215

SAVE THE DATE

North Shore Child & Family Guidance Center's

SPRING LUNCHEON

APRIL 27
2023

at Glen Head Country Club

Boutiques & Mahjong, Canasta or Bridge

For more information or to register please call or email:

(516) 626-1971 ext. 309 or

MEspichan@northshorechildguidance.org